

## Company Profile

<b>Company Name</b>	Hitachi Software Engineering Co., Ltd. (HitachiSoft)
<b>Head Office</b>	4-12-7 Higashishinagawa, Shinagawa-ku, Tokyo 140-0002, Japan
<b>Phone</b>	03-5780-2111 (Head Office Phone Number)
<b>Representative</b>	Isao Ono, Representative Executive Officer, President and Chief Executive Officer, and Board Director
<b>Founded</b>	September 21, 1970
<b>Capital</b>	34,182 million yen
<b>Total Number of Shares Issued</b>	64,479,000 shares
<b>Stock Exchange Listing</b>	Tokyo Stock Exchange 2nd Section: October 1990 Tokyo Stock Exchange 1st Section: September 1992
<b>Number of Employees</b>	5,227 (as of Sep.30,2007)



## Company Profile

**HitachiSoft**  
創る、支える、拓く

### Domestic Offices

<b>X-Business Solution Center</b>	4-12-6 Higashishinagawa, Shinagawa-ku, Tokyo 140-0002, Japan	TEL +81-3 5780-2225 FAX (03) 5780-1079
<b>Life Science Research Center</b>	1-1-43 Suehiro-cho, Tsurumi-ku, Yokohama-shi 230-0045, Japan	
<b>Totsuka Annex</b>	(Tokiwa Building) 549-6 Shinano-cho, Totsuka-ku, Yokohama-shi 244-0801, Japan	
<b>Hokkaido Office</b>	(Sapporo L-Plaza 13F) 28 Kita 8, Nishi 3, Kita-ku, Sapporo-shi 060-0808, Japan	
<b>Kitanohon Office</b>	(Hirosaki Daikancho Building) 38 Oaza, Daikan-cho, Hirosaki-shi 036-8001, Japan	
<b>Hokuriku Office</b>	(Asahi Seimei Kanazawa Daini Building) 1-2-20 Korinbo, Kanazawa-shi 920-0961, Japan	
<b>Kyushu Development Center</b>	(Kurume Research Center Building) 1-1 Hyakunenken, Kurume-shi, 839-0864, Japan	
<b>Kyushu Office</b>	(Hitachi Kyushu Building) 2-1-1 Momochihama, Sagara-ku, Fukuoka-shi 814-0001, Japan	
<b>Hokkaido Branch</b>	(Sapporo L-Plaza 13F) 28 Kita 8, Nishi 3, Kita-ku, Sapporo-shi 060-0808, Japan	TEL (011) 746-4460 FAX (011) 746-0149
<b>Chubu Branch</b>	(Matsushita Chunichi Building 7F, Reception 8F) 4-14-5 Sakae, Naka-ku, Nagoya-shi 460-0008, Japan	TEL (052) 265-0311 FAX (052) 265-2768
<b>Toyota Branch</b>	(Yahagi Toyota Building) 1-5-10 Kosaka Honmachi, Toyota-shi 471-0034, Japan	TEL (0565) 31-9011 FAX (0565) 31-9031
<b>Kansai Branch</b>	(Nomura Fudosan Osaka Building) 1-8-15 Azuchi-machi, Chuo-ku, Osaka-shi 541-0052, Japan	TEL (06) 4705-0811 FAX (06) 4705-0177
<b>Kyushu Branch</b>	(Hitachi Kyushu Building) 2-1-1 Momochihama, Sagara-ku, Fukuoka-shi 814-0001, Japan	TEL (092) 844-8235 FAX (092) 844-8238

### Major Domestic Subsidiaries and Affiliates

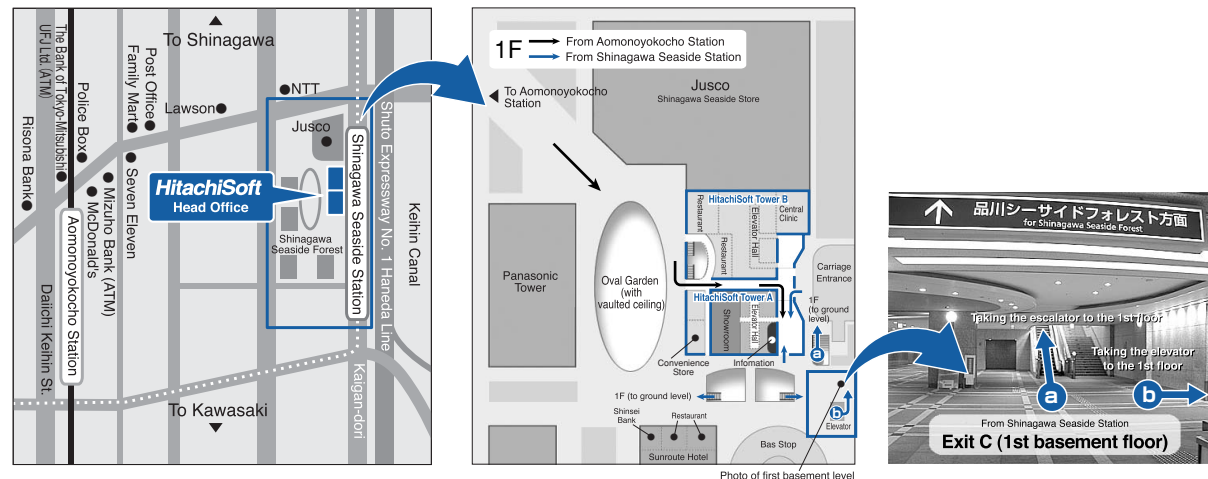
Hitachi Business Solution Co., Ltd.  
Hitachi Soft System Design Co., Ltd.  
CabCard Service Co., Ltd.  
INES Corporation  
Business Brain Showa Ota Inc.  
DACS Co., Ltd.

### Overseas Subsidiaries

Hitachi Software Engineering America, Ltd. (U.S.A)  
Hitachi Software Engineering Europe A.G. (Germany)  
Hitachi Software Engineering France S.A.S. (France)  
Hitachi Software Engineering UK Ltd. (Britain)  
Cambridge Hitachisoft Educational Solutions Plc. (Britain)

## Hitachi Software Engineering Co., Ltd.

Head Office: (HitachiSoft Tower A) 4-12-7 Higashishinagawa, Shinagawa-ku, Tokyo 140-0002, Japan Phone: +81-3 5780-2111 (Head Office Phone Number)



### Closest Transportation Facilities

One-minute walk from Shinagawa Seaside Station on the Rinkai Line Eight-minute walk from Aomonoyokocho Station on the Keihin Kyuko Line

## Business Fields

Business Fields		Primary Area of Focus and Strengths	
Systems development	Basic software	<ul style="list-style-type: none"> <li>Embedded [Storage, Network, Auto navigation age]</li> <li>OS, Middleware [DB, Data Communication, Systems management]</li> </ul>	
	Application software, SE	<ul style="list-style-type: none"> <li>Large-scale AP system development</li> </ul>	Finance, Public, Social, Industry, Distribution, Telecommunications
Service		<ul style="list-style-type: none"> <li>ASP/SaaS, Contents service</li> <li>Maintenance services, Outsourcing/BPO, etc.</li> </ul>	
Software Products & Packages		Security (Hibun) Document management (Katsubun) Systems management	Distribution package
Information processing equipment		HitachiSoft hardware Interactive electronic board (StarBoard), Finger vein authentication system (Johmon), etc.	, Distribution hardware

System integration

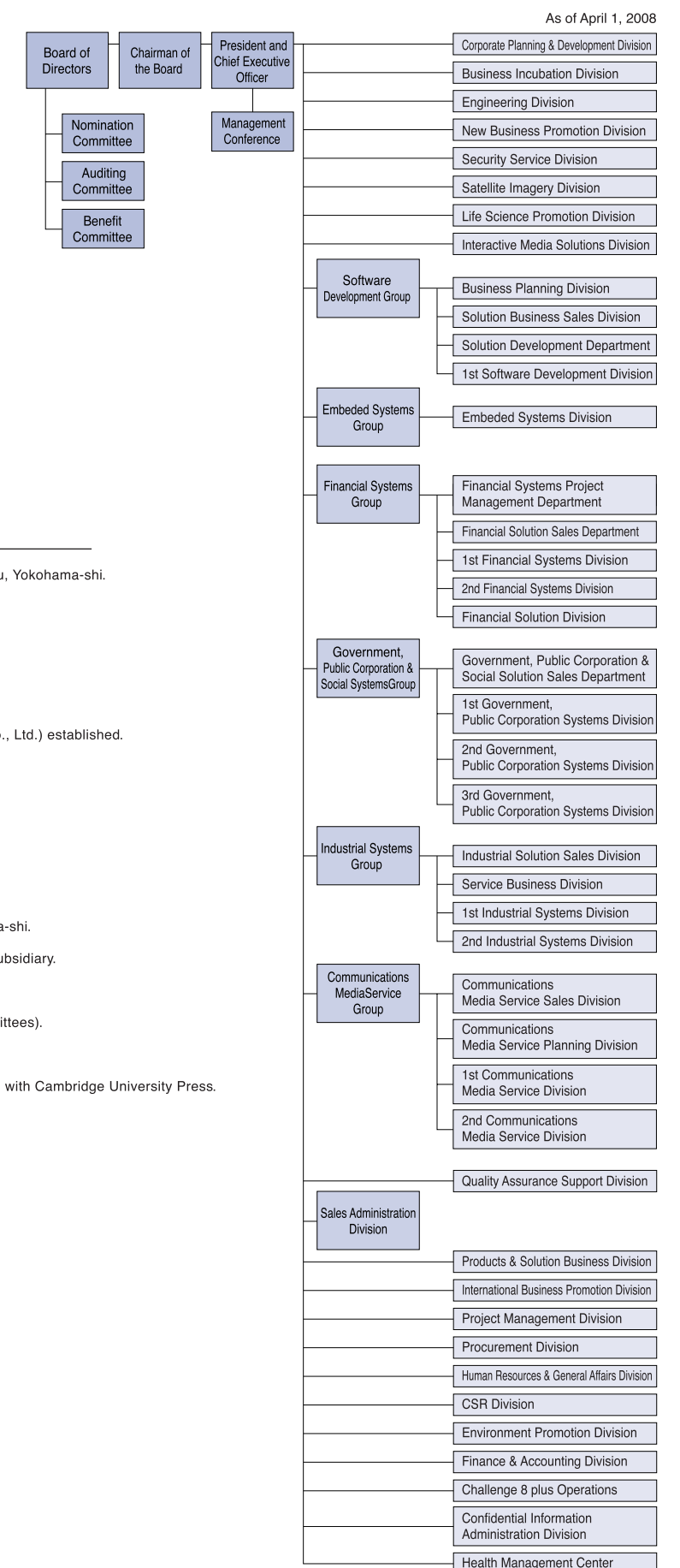
## Number of Qualified Employees (as of September 30, 2007)

[Information Technology Engineer Qualifications]	[Other Qualifications]
Systems Analyst	31 Project Management Professional (PMP) 925
Systems Auditor	62 Certified Internet Webmaster (CIW) 1,850
Project Manager	81 Security Education Alliance/ Japan (SEA/J) Certified Professional 649
Application Systems Engineer	439 Microsoft Certified Professional (MCP), Microsoft Certified Systems Engineer (MCSE), etc. 3,772
Network Systems	410 Oracle Master 855
Database Systems	258 R/3 Certified Consultant 444
Systems Management	127 Java Certified Professional 628
Embedded Systems Development	37 XML Master 970
Information Security Engineer	67 DB2 Global Master, Certified Lotus Professional, etc. 314
Software Design & Development Engineer	2,617 IT Coordinator 67
Fundamental Information Technology Engineer	4,363
Senior Systems Administrator	18
Information Systems Security Administrator	387
Systems Administrator	483

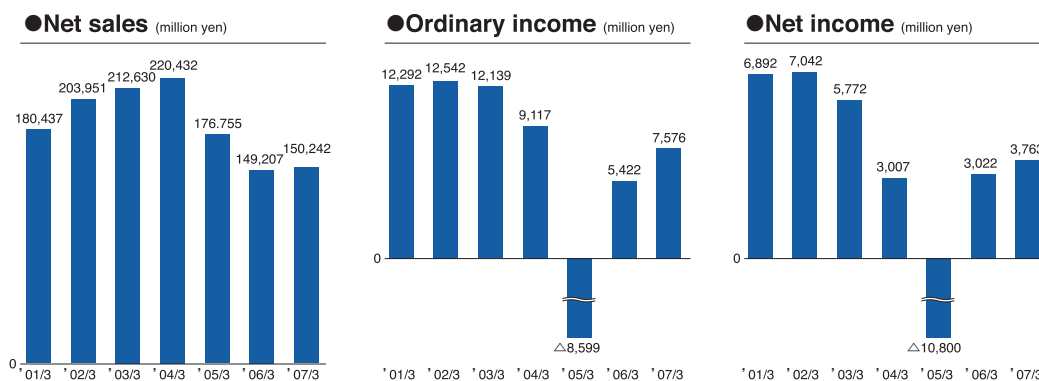
## Company History

- September 1970** Hitachi Software Engineering Co., Ltd. established in Totsuka-cho, Totsuka-ku, Yokohama-shi.
- March 1981** Head office relocates to Onoe-cho, Naka-ku, Yokohama-shi
- May 1989** Hitachi SK Social System Co., Ltd. established.
- January 1991** Hitachi Software Engineering America Ltd. established in the U.S.
- September 1992** Listed on the First Section of the Tokyo Stock Exchange.
- April 1994** Hitachi SK Business Solution Co., Ltd. (now the Hitachi Business Solution Co., Ltd.) established.
- April 1994** Hitachi Software Engineering Europe France S.A.S. established.
- October 1998** Hitachi Software Global Technology, Ltd. established in the U.S.
- April 1999** Invested in DNA Chip Research Inc. (currently DNA Chip Research Inc.).
- December 1999** Formed a capital and business alliance with INES Corporation.
- February 2000** Invested in Plant Genome Center Co., Ltd.
- November 2001** Opened Life Science Research Center in Suehiro-cho, Tsurumi-ku, Yokohama-shi.
- September 2002** CabCard Service Co., Ltd. (now CabCard Service Co., Ltd.) established as subsidiary.
- October 2002** Relocated head office to Shinagawa-ku, Tokyo.
- June 2003** Shift to "Company with Committees" system (currently a company with committees).
- December 2003** Hitachi Software Engineering UK established in Britain.
- December 2003** Cambridge Hitachisoft Educational Solutions Plc. (joint company) established with Cambridge University Press.
- January 2006** Business Brain Showa Ota Inc. established as affiliate.
- March 2007** Made DACS co., Ltd. its subsidiary by acquired the equity.

## Organization



## Business Performance (Non-Consolidated)



**Research and Development Expenses** 1,909 million yen (fiscal year ended March, 2007)

**Patent Registrations** 820 (as of March 31, 2007)